

Compact

climatic
and thermostatic
chambers

Small, powerful and fully equipped

ACS Compact Test Chambers provide high performances in limited space. Small footprint, easy installation, low power consumption, low noise level and full basic features including the inspection window, make these chambers the ideal choice. A compact unit easy to be installed in any R&D Department capable of testing small components and products.



| | MODEL | DY16 T | DY60 T(C) | DY110 (C) ¹ | DY200 (C) ¹ |
|--|----------------------|----------------------------|-------------|------------------------|--------------------------------|
| Useful capacity (l) | | 16 | 59,5 | 110 | 206 |
| Internal dimensions approx. (mm) | Width | 310 | 350 | 548 | 601 |
| | Depth | 230 | 340 | 447 | 541 |
| | Height | 206 | 500 | 447 | 634 |
| External dimensions approx. (mm) | Width | 465 | 630 | 877 | 927 |
| | Depth | 541 | 970 | 1080 | 1379 |
| | Height | 685 | 1180 | 1400 | 1794 |
| Temperature range (°C) | Basic | -35...+130 | -40...+180 | -40...+180 | -40...+180 |
| | C model | | -70...+180 | -70...+180 | -70...+180 |
| Temperature fluctuation (K) | | ±1 | ±0.1...±0.3 | ±0.1...±0.3 | ±0.1...±0.3 |
| Temperature changing rate Heating ⁴⁺⁵ (K/min) | Basic (-40/+180°C) | 4,5 | 3 | 3,2 | 4 |
| | C model (-70/+180°C) | | 3 | 3,2 | 4 |
| Temperature changing rate Cooling ⁴⁺⁵ (K/min) | Basic (+180/-40°C) | 3,5 | 3 | 4 | 4,5 |
| | C model (+180/-70°C) | | 3 | 2,8 | 3 |
| Humidity range (%) (τ=-3/+93°C) ² | | | | 10...95 | 10...95 |
| Temperature range for climatic test (°C) | | | | 10...95 | 10...95 |
| Humidity fluctuation (%) | | | | ±1...±3 | ±1...±3 |
| Maximum thermal Load (W) ⁵ | Basic T=+25°C | 250 | 250 | 350 | 2300 |
| | C model T=+25°C | | 250 | 500 | 1500 |
| Rated power (kW) | Basic | 0,7 | 2,3 | 3 | 6 |
| | C model | | 3,9 | 3,7 | 7 |
| Rated current absorption (A) | Basic | 4 | 11 | 16 | 10 |
| | C model | | 15 | 16 | 12 |
| Weight (kg) | Basic | 60 | 210 | 350 ⁶ | 485 |
| | C model | | 230 | 360 ⁶ | 545 |
| Sound pressure level dB(A) ³ | Basic | 52 | 57 | 52 | 53 |
| | C model | | 59 | 52 | 59 |
| Supply voltage (Vac) | | 230V ±10%/50Hz/1 + G | | | 400 V ±10%/50Hz/3 + N+ G |

1. for Temperature only version add the suffix T - 2. τ= +4°C/+93°C for continuous test - 3. measured at 1 m distance in front of the unit, free field measurement - 4. according to IEC 60068-3-5 and IEC 60068-3-6 - 5. The performance data refer to +22°C ambient temperature, 230V or 400V nominal voltage, without specimen - 6. value without supporting table



The Compact Test Chambers are equipped with the powerful KeyKratos Plus touchscreen control system, based on PID control through PLC, having the following advanced features:

- **Memory capacity to 1000 cycles** with 350 segments (on Compact flash).
- **Unlimited real time recording of temperature and humidity** (only for 110 and 200 l) versus time (log on Secure Digital).
- **A trend chart for recorded variables** available with a scale from -100/+200.
- **Messages on scheduled maintenance activities.**
- **Synoptic graphs for the chamber,** low and high stage refrigeration.
- **Data saved in CSV format (Comma Separated Value) for easy export to Excel®** from Secure Digital to Pendrive via USB interface located on front panel (program files are easily convertible into graphic format).

Multi-chamber remote control is available as option together with WinKratos S/W.

All models require just a single-phase electrical supply, except for 200 l chamber running on 3-phase power. Models 16, 60, 110 l fit easily on a laboratory's counter top. Model 110 l can also be supplied with an optional supporting table with wheels (see picture above).

Basic Configuration

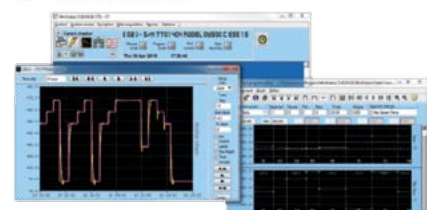
- Control by PLC and "**KeyKratos Plus**" touchscreen on the door
- Inspection window
- No. 1 internal grid shelf (for 60, 110 and 200 l)
- Air condenser
- Internal light
- No. 1 porthole
- Min/max digital thermostat with independent probe (optional for 16 and 60 l)
- No. 1 auxiliary free contact
- Ethernet port
- RS232 serial interface

Options

- Additional portholes
- UV lamp (only for 110 and 200 l)
- Internal shelves (only for 110 and 200 l)
- Set of no. 4 analogic inputs
- Set of no. 4 PT100 inputs
- Set of no. 8 auxiliary contacts (no. 2 for 16 and 60 l)
- No break power unit for PLC
- Specimen switching off in case of chamber alarm (only for 110 and 200 l)
- T e RH analogic retransmission
- Surface cleaning set

- Supporting table with wheel (only for 110 l)
- Software Winkratos for single and multi-chamber control

WinKratos



Angelantoni
MORE THAN YOU THINK



Angelantoni Test Technologies, owned by the **Angelantoni Group**, is the only company capable of offering a comprehensive range of environmental test chambers, **ACS** branded, for a great variety of applications, thanks to the expertise and technical know-how of its teams of experts. Innovation, flexibility and organization have always been the keys to success for ACS, world-famous since 1952 also for its high-tech test equipment such as Thermal High Vacuum Chambers for Aerospace applications and Calorimeters.

Authorised distributor

In Australia:

For customer service, call 1300-735-292

To fax an order, use 1800-067-639

To email an order, ordersau@thermofisher.com

In New Zealand:

For customer service, call 0800-933-966

To fax an order, use 0800-329-246

To email an order, ordersnz@thermofisher.com

ThermoFisher
SCIENTIFIC



Angelantoni Test Technologies

Loc. Cimacolle, 464 - 06056 Massa Martana (Pg) - Italy
Tel. +39 075.89551 (a.r.) - Fax +39 075 8955200
info@acstestchambers.it

www.att-testing.com
www.acstestchambers.com

